



The Fairway, Palmers Green, London, N13
£635,000 Freehold

Anthony Webb
ESTATE AGENTS

The Fairway, Palmers Green, London, N13

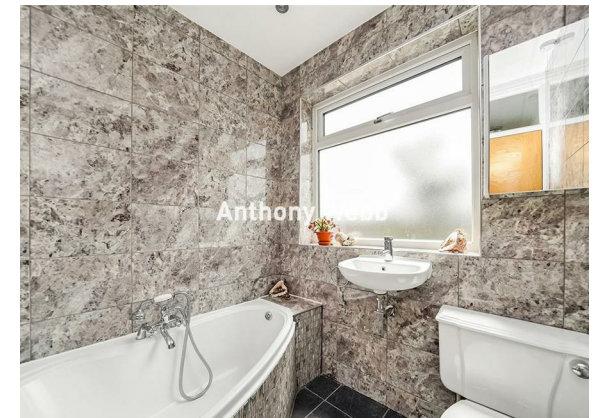
SPACIOUS EXTENDED FAMILY HOME. A beautifully presented four bedroom 1930s built semi-detached house located in this popular residential turning off Firs Lane.

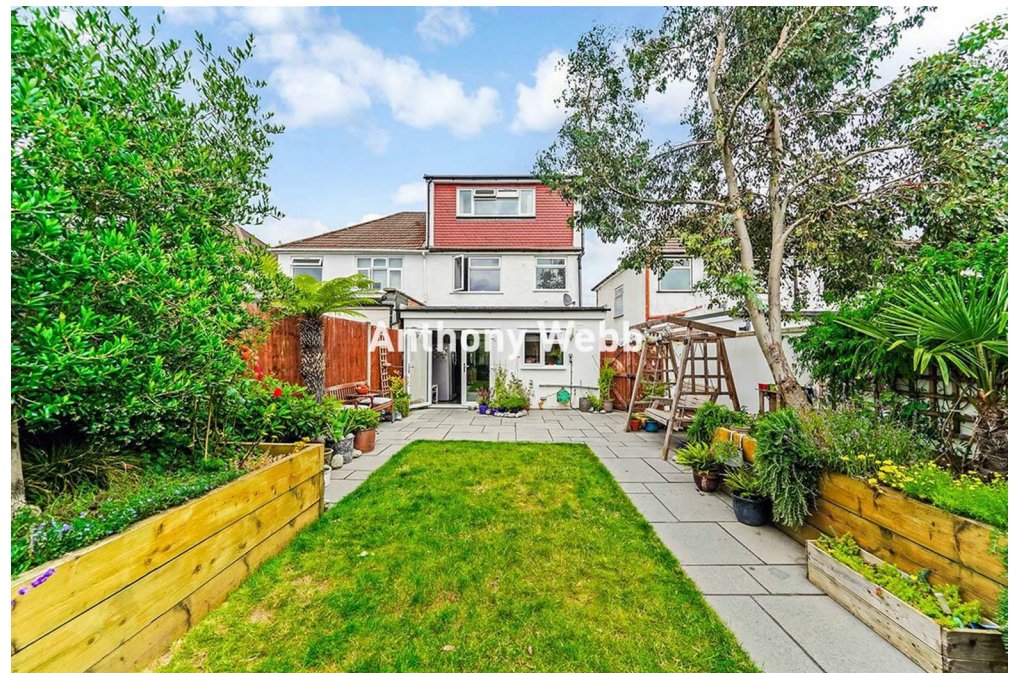
The property on the ground floor consists of an extended modern kitchen with doors opening to a paved garden and lawn, a spacious open plan living/dining room, a guest shower room/utility room and stairs to the first floor. The first floor offers two double bedrooms, a single bedroom and a modern family bathroom. The converted loft has a further spacious double bedroom. Further benefits include double glazing, off street parking and well maintained half paved rear garden with shed.

The property is within easy reach of local shops and bus routes. The A10 and A406 provide excellent road links into London and beyond. Firs Farm primary school and Winchmore School are within a short walk.

Enfield Council tax band E

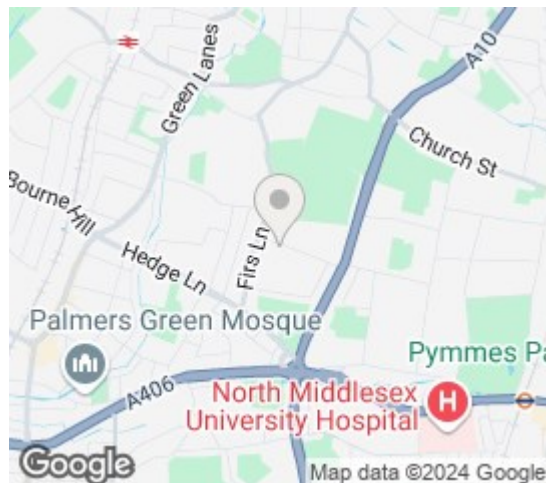
- Four bedroom semi-detached house
- Beautifully presented
- Modern kitchen
- Open plan living/dining room
- Guest shower/w.c room
- Half paved rear garden and lawn
- Off street parking
- Sought after location





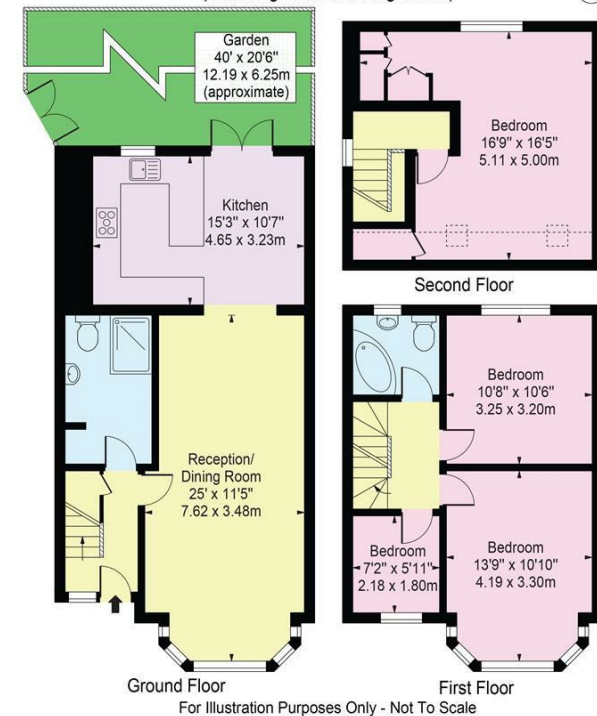
The Fairway Palmers Green London N13 5QN

Tenure: Freehold
Gross Internal Area: 1247.00 sq ft



Energy Efficiency Rating		Current	Potential
Very energy efficient - lower running costs			
(92 plus) A			
(81-91) B			
(69-80) C			
(55-68) D			
(39-54) E			
(21-38) F			
(1-20) G			
Not energy efficient - higher running costs			
England & Wales		EU Directive 2002/91/EC	
Environmental Impact (CO ₂) Rating		Current	Potential
Very environmentally friendly - lower CO ₂ emissions			
(92 plus) A			
(81-91) B			
(69-80) C			
(55-68) D			
(39-54) E			
(21-38) F			
(1-20) G			
Not environmentally friendly - higher CO ₂ emissions			
England & Wales		EU Directive 2002/91/EC	

The Fairway, N13 5QN
Approx. Total Internal Area 1247 Sq Ft - 115.85 Sq M
(Including Restricted Height Area)
Approx. Gross Internal Area 1212 Sq Ft - 112.60 Sq M
(Excluding Restricted Height Area)



For Illustration Purposes Only - Not To Scale
This floor plan should be used as a general outline for guidance only and does not constitute in whole or in part an offer or contract. Any intending purchaser or lessee should satisfy themselves by inspection, searches, enquiries and full survey as to the correctness of each statement. Any areas, measurements or distances quoted are approximate and should not be used to value a property or be the basis of any sale or let.

Property particulars as supplied by Anthony Webb Estate Agents are set out as a general outline in accordance with the Property Misdescriptions Act (1991) only for the guidance of intending purchasers of lessees, and do not constitute any part of an offer or contract. Details are given without any responsibility, and any intending purchasers, lessees or third parties should not rely on them as inspection or otherwise as to the correctness of each of them. We have not carried out a structural survey and the services, appliances and specific fittings have not been tested. All photographs, measurements, floor plans and distances referred to are given as a guide only and should not be relied upon for the purchase of carpets or any other fixtures statements or representations of fact, but must satisfy themselves by or of fittings, gardens, roof terraces, balconies and communal gardens as well as tenure and lease details cannot have their accuracy guaranteed for intending purchasers. Lease details, service ground rent (where applicable) are given as a guide only and should be checked and confirmed by your solicitor prior to exchange of contracts. no person in the employment of Anthony Webb has any authority to make any representation or warranty whatever in relation to this property.

348 Green Lanes, Palmers Green, London N13 5TJ
020 8882 7888
palmersgreen@anthonywebb.co.uk
anthonywebb.co.uk

Anthony Webb
ESTATE AGENTS